

DIGITAL ID VERIFICATION

Technology enabled protection for your customer data, using the latest in biometric facial recognition technology to:

- + Protect your pension and its customers
- + Create efficiencies in operational processes
- + Improve your customer experience

Wherever finances are involved there's a risk of financial fraud. When it comes to pension scams it's crucial that pension schemes and providers do all they can to protect their members.

Whether you need to carry out a proof of life check for a pensioner in payment or perform a 'Know Your Customer' check before completing a transaction – digital ID verification makes your processes safer, faster and more cost effective.

Make paper ID checks a thing of the past by using our digital ID verification tool.

IDself
Identity verified...

SAFE & SECURE

We use biometric technology to cross reference facial features and movements against scanned ID documents, to authenticate a person's ID in real-time.

REDUCE RISK

You need to ensure you're paying the right benefits to the right people – to protect the scheme, accurately calculate liabilities and prevent financial fraud.

EASY-TO-USE

3 simple steps:

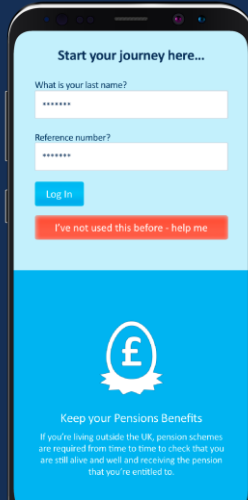
- log in (using the details provided)
- upload a photo of an identification document
- take a short video

Digital ID verification makes your processes safer, faster and more cost effective.

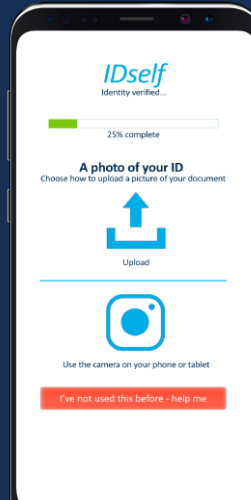
How does IDself work?

3 simple steps...

1. Log in



2. Upload ID



3. Take a video



Why use IDself?

Prevent fraud – proof of life checks help you ensure you're paying benefits when you need to. Digital ID verification increases accuracy.



Improve your customer journey – digital ID verification at point of claim, transfer or any other transaction, will speed up the customer experience with fast and accurate results.



Increase efficiencies – lower costs and time delays by reducing manual document processing.



AUTOMATED DOCUMENT AUTHENTICATION



ADVANCED FACIAL-FEATURE MATCHING



FULL AUDIT TRAIL

How can IDself help you?

We've been helping the pension industry keep its data clean and prevent fraud for more than 20 years. IDself makes the process quicker, safer and cheaper.

Find out more and request a demo: www.itm.co.uk or call **020 7648 9990**.

Data / Technology / Consultancy

 @itmdataexperts  @itm-data
www.itm.co.uk / 020 7648 9990